

# Haringey Crime and ASB Hotspots

**November 2021**

# Haringey's Approach to Identifying Crime and ASB Hotspots

- Crime and anti-social behaviour (ASB) hotspots are identified across Haringey through a number of different processes.
- This includes ongoing analysis of police, Council and partnership data to understand trends and emerging threats, with a focus on the Victim-Offender-Location-Time (VOLT) model.
- The Haringey Partnership Problem Solving Group (PPSG) has been operational since 2017 and acts as the single co-ordination group for all partners to identify, flag and raise crime and ASB issues they are facing that require a co-ordinated partnership approach to tackle.
- ASB reports are received directly by LBH via the [ASB.Enforcement@haringey.gov.uk](mailto:ASB.Enforcement@haringey.gov.uk) mailbox, council website or call centre. The reports are logged, assessed and then passed to the Enforcement Team to open a case and start an investigation.
- CMARAC-Meets on a monthly basis to discuss complex ASB cases and develop partnership action plans to address historical ASB and crime related issues linked to particular addresses/locations.

# Enforcement Tools

## Council Enforcement

- Site visits,
- Interview victims,
- Deliver ASB diary cards
- Drafting Action Plans,
- Interview suspects,
- Erect ASB warning signs,
- Issue written warnings,
- Joint (Action Days) operations with Police & partners
- Serve (CPN') Community Protection Notices,
- Issue fpn's (PSPO's) (CPN's)
- Liaise with partners including Police & outreach / safeguarding services.
- Attend Professionals meetings
- Design out Crime



**The Council**  
 Make a report on line at  
[www.haringey.gov.uk/anti-social-behaviour](http://www.haringey.gov.uk/anti-social-behaviour)  
 Or call the council on  
**020 8489 1335**  
 (Monday to Friday, 9am - 5pm)

**The Police**  
 Contact your local Safer Neighbourhood Team on line at  
[www.met.police.uk/your-area/haringey](http://www.met.police.uk/your-area/haringey)

In a **non-emergency** or if the incident has already occurred call **101**  
 If the crime is occurring or in an emergency always call **999**

**Council tenants**  
 contact Homes for Haringey on  
**020 8489 5611**  
 (Mondays to Fridays, 8am to 6pm)  
**customerservices@homesforharingey.org**  
 Online at  
[www.homesforharingey.org/seemydata](http://www.homesforharingey.org/seemydata)



Community Safety & Enforcement  
 Anti-social Behaviour Crime and Policing Act 2014



## COMMUNITY PROTECTION NOTICE

Name: \_\_\_\_\_

Address: \_\_\_\_\_

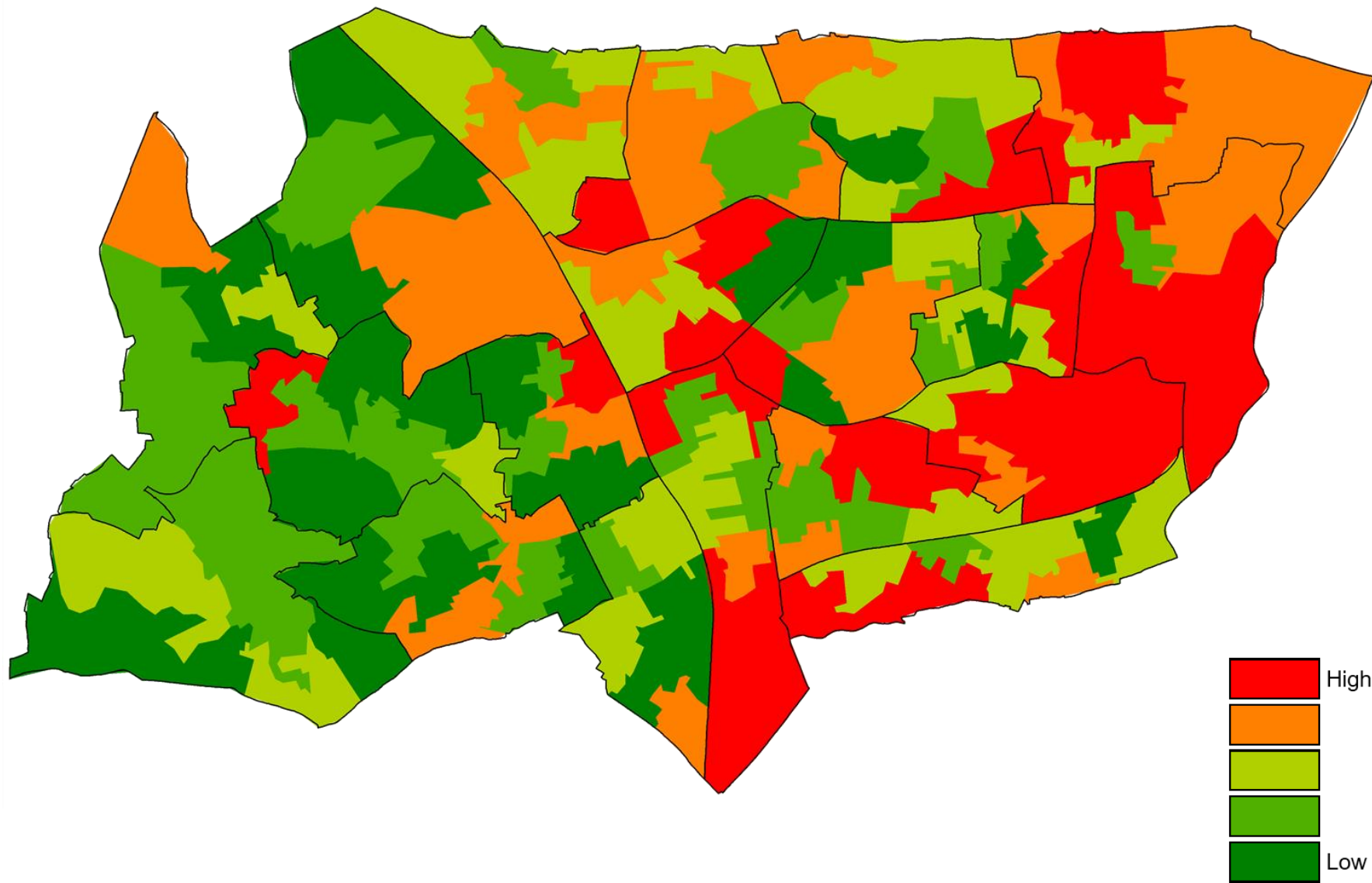
Conduct \_\_\_\_\_

## Fixed Penalty Notices

Environmental Protection Act 1990  
 Highways Act 1980

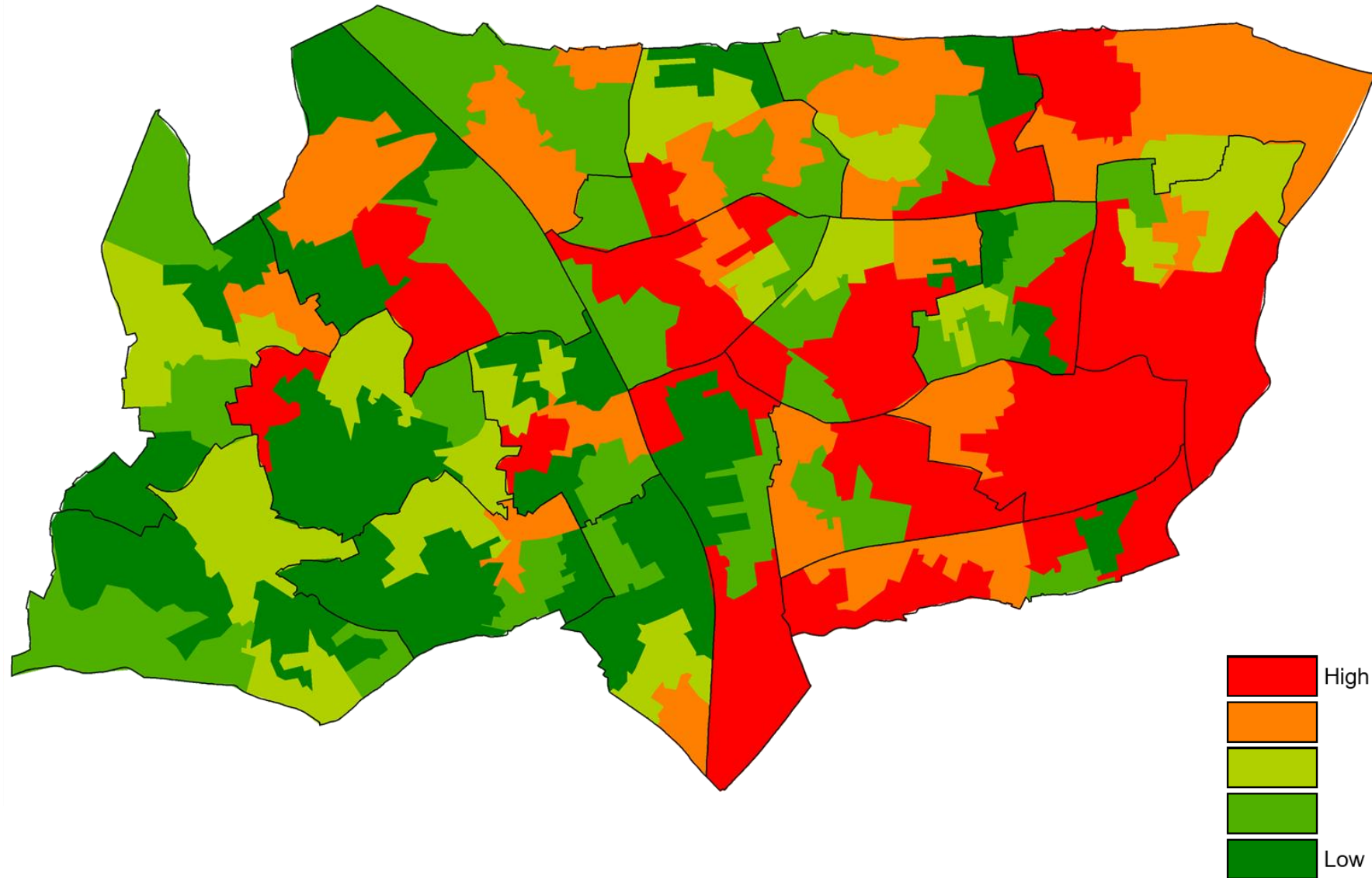
## Anti-Social Behaviour (ASB) Hotspots

- ASB hotspots are spread across the borough.
- Most ASB is related to neighbour disputes and is concentrated around higher density housing estates.
- Some ASB is also reported around busy high roads and shopping areas.

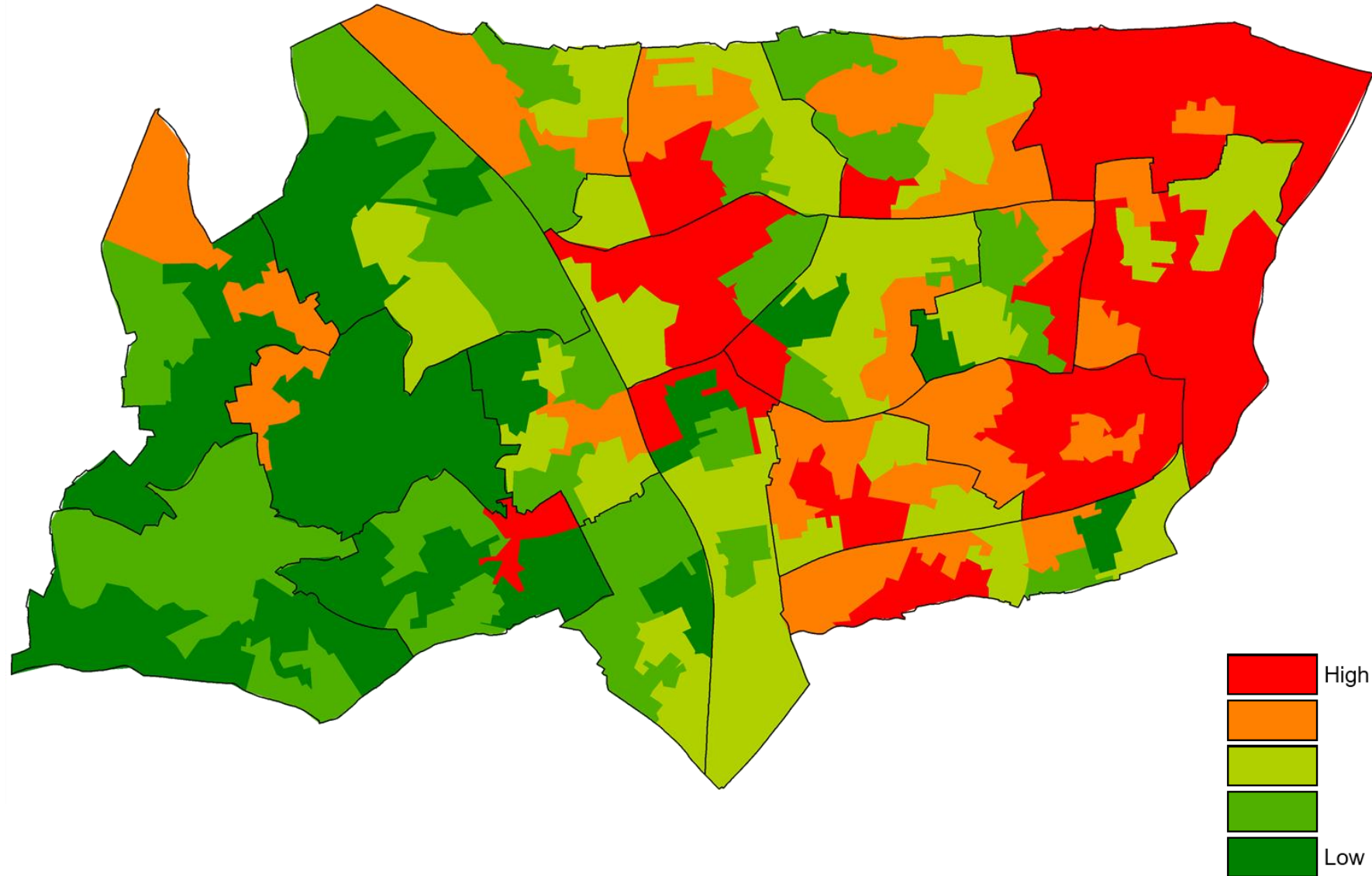




- Robbery hotspots are concentrated in a number of areas.
- This includes transport hubs and shopping locations, particularly towards the east of the borough.
- A number of hotspots are located around Tottenham Hale, Tottenham Green and Seven Sisters.



- Violence hotspots in Haringey are reasonably localised, particularly in the east of the borough.
- Busy high roads are most often the location of violence hotspots, including Tottenham High Road, Northumberland Park and Wood Green.



# Haringey's Approach to Tackling Crime and ASB Hotspots

## Projects and Provision

- **Partnership Problem Solving Group**- The PPSG is a multi-agency group which identifies emerging and ongoing crime/ASB hotspots and deploys partnership resources to respond to issues.
- **Local Gang Exit Project**. Outreach workers are deployed into key violence and crime hotspots to engage with key individuals to encourage them away from gang/crime and criminal peer groups.
- **Haringey Community Gold**: Deploys outreach workers across Haringey in key hotspot locations to work with YP and encourage them into positive activities.
- **Youth Justice Service**, (Serious Youth Violence Workers – community & pre release), working alongside other provision to deploy resource to key emerging and ongoing crime/ASB hotspots.
- -Working with victims of CSE and with schools to promote safety planning. **Young Persons Advocate on sexual exploitation and violence**
- **Victim Support Young Person's Project**- Works across Haringey to support victims of crime and ASB and to encourage reporting.
- **Dept Work and Pensions** - support workers- Working alongside colleagues from key services to encourage YP and offenders into education, training or employment (dependant upon job readiness).
- **Drug Intervention and Mental Health**
- **Council Services** – Housing, CYPS, Early Help-Targeted Support, etc
- **Project Future** -Trauma informed approaches with known gang members
- **A&E based victim support**-Based at North Middx A&E, and Major London Trauma Hospitals
- **Community and Voluntary Sector provision**, My ends, (Home Cooked), Communities Against Violence, St Giles Trust
- **Pentonville Prison Programme**-(*"Through my eyes"*)- Working with known offenders linked to gangs and violence.
- **Project Future**-Trauma informed psychological approaches working with Young People up to age 25 in key crime and violence hotspot